



MindManager[®]

for SharePoint[®]

Using a trial of MindManager for SharePoint

MindManager for SharePoint is a completely separate build that can be installed on any system, regardless if MindManager 8 is currently on the system.

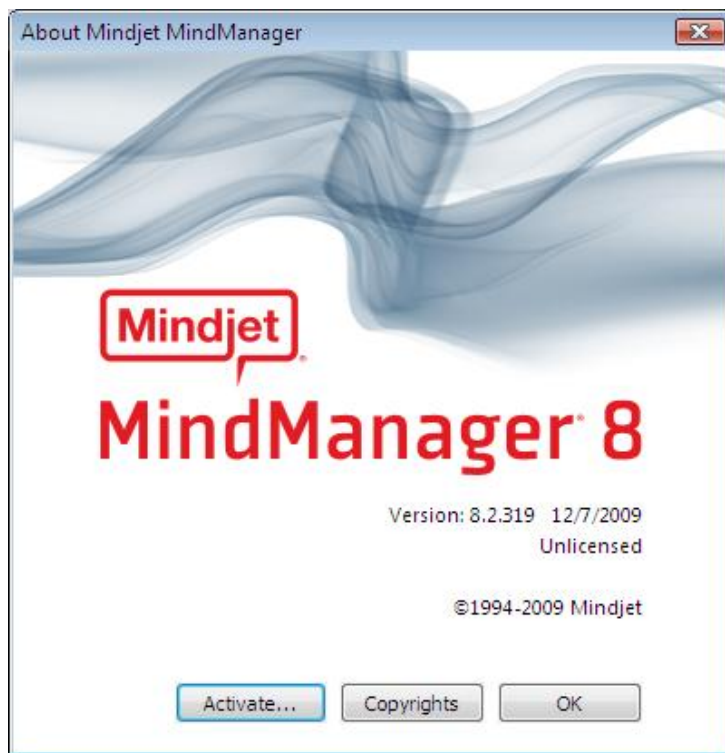
To trial MindManager for SharePoint where MindManager 8 for Windows is currently installed, a user simply installs the new build using standard installation instructions. The new version will be installed over the existing version and be in a 30-day trial state. See the installation instructions below for this procedure.

If a user wishes to revert back to the standard MindManager 8 for Windows, the below uninstallation procedure should be followed.

Installation instructions for MindManager for SharePoint

When installing over a current version of MindManager 8 for Windows

1. Record your license key. Open MindManager and go to Tools – About MindManager. Note and record your license key outside of MindManager. Saving the licenses key file is an important precaution step.

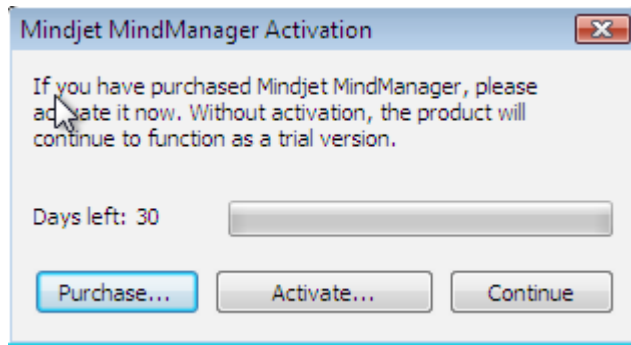




MindManager[®]

for SharePoint[®]

2. Launch the MindManager for SharePoint installer. This is the installation file downloaded as part of the trial sign up. Follow the installation wizard to completion.
3. After installation, launch MindManager for SharePoint. You should see the trial dialog and will be able to use all the functionality of MindManager for SharePoint for the 30-day trial period.



Uninstallation instructions for MindManager for SharePoint with MindManager 8

Reverting back to MindManager 8 after MindManager for SharePoint has been installed:

1. Uninstall MindManager for SharePoint. Use the standard uninstallation instructions through the control panel for the version of Windows in use.
2. Reinstall MindManager 8 for Windows using the install file. Where the installer needs to be downloaded again, the download link can be found in the My Products tab after logging in to your Mindjet ID at mindjet.com.
3. Launch MindManager after installation is complete. The application should retain the activation status with your previous key.



MindManager[®]

for SharePoint[®]

Installing MindManager for SharePoint when using MindManager 7 and previous versions

MindManager for SharePoint can be installed side-by-side with MindManager 7 and previous versions. They are separate builds and can be run concurrently. The most recent build installed will only take over associations with any external add-ins such as the Microsoft Office exports. For this scenario, you should simply install MindManager for SharePoint using standard procedures.

Uninstallation instructions for MindManager for SharePoint with MindManager 7 and previous versions

To uninstall MindManager for SharePoint when MindManager 7 and previous versions are installed follow the below instructions:

1. Uninstall MindManager for SharePoint. Use the standard uninstallation instructions through the control panel for your installed version of Windows.
2. Repair the previous version of MindManager still in use. The repair feature is available for MindManager 7, 6 and X5. To repair, go to your computer Control Panel located in the Start menu. Choose 'Add/Remove' Programs. For earlier versions of MindManager, repair is not available. Reinstallation is necessary.
3. Select MindManager and choose "Change." Follow the wizard and choose "Repair." The repair feature should finish quickly. This will re-register the add-ins properly.

Your version of MindManager should function normally after repair.

Installing MindManager for SharePoint when using MindManager 7.2

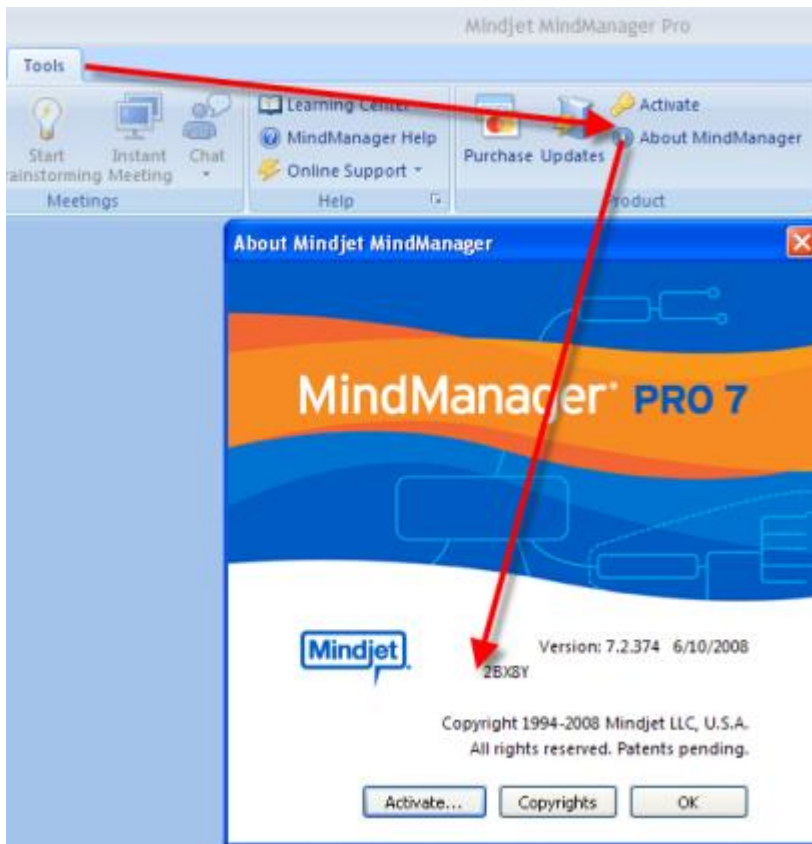
MindManager for SharePoint can be installed side-by-side with MindManager 7.2. The below instructions should be followed.

1. Record your license key. In MindManager 7.2, go to 'Tools > About MindManager' and record your license key. You can use the activate button if you wish to copy the key from the field and cancel the activation after. Be sure to record the license key outside of MindManager.



MindManager[®]

for SharePoint[®]

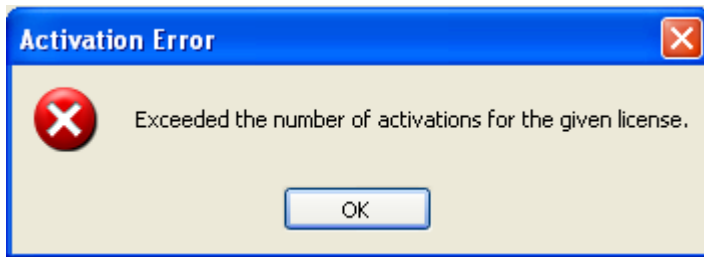


2. Install MindManager for SharePoint. Use the same install process as described in the section “Installation instructions for MindManager for SharePoint when using MindManager 8 for Windows.”
3. If you wish to remove the trial version of MindManager for SharePoint and revert back to your version of MindManager 7.2, use the same instructions in the section “Uninstallation instructions for MindManager for SharePoint.” For step 3 however, you will be required to reactivate your version of MindManager 7.2 using the same license key you recorded in step one of these instructions. If you received error message **“Exceeded the number of activations for the given license,”** you can contact Mindjet customer service to receive two additional activations to this key. Use www.mindjet.com/contactus and be sure to include your license key in your request.



MindManager[®]

for SharePoint[®]



Installing MindManager for SharePoint when using MindManager 7 and previous versions

MindManager for SharePoint can be installed side-by-side with MindManager 7 and previous versions. They are separate builds and can be run concurrently. The most recent build installed will only take over associations with any external add-ins such as the Microsoft Office exports. For this scenario, you should simply install MindManager for SharePoint using standard procedures.

Uninstalling MindManager for SharePoint when using MindManager 7 and previous versions

To uninstall MindManager for SharePoint when MindManager 7 and previous versions are also installed follow the below instructions:

4. Uninstall MindManager for SharePoint. Use the standard uninstallation instructions through the control panel for the version of Windows in use.
5. Repair the previous version of MindManager still in use. The repair feature is available for MindManager 7, 6 and X5. For earlier versions, you will need to reinstall. To repair, find MindManager in your programs list from the control panel. This is located under 'Programs and Features' on Windows 7 & Windows Vista and 'Add or Removes Programs' on Windows XP.
6. Select MindManager and choose "Change." Follow the wizard and choose "Repair." The repair feature should finish quickly. This will re-register the add-ins properly.

After the repair, the version of MindManager should function normally.